

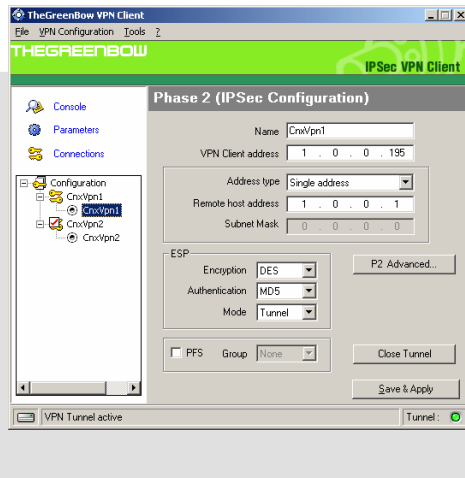


# TheGreenBow IPSec VPN Client

## DataSheet

WebSite: <http://www.thegreenbow.com>

Contact: [support@thegreenbow.com](mailto:support@thegreenbow.com)



## Securing Communications

Designed specifically for the mobile work force, TheGreenBow™ VPN Client is a software implemented VPN IPSec solution that allows a user to establish a secure connection to the corporate environment, over the internet.

Where most of the competitors are hardware dependant, TheGreenBow™ VPN Client is interoperable and compatible with all VPN IPSEC gateways. TheGreenBow™ VPN Client provides the most comprehensive interface in the market : setting up a VPN is no longer a painful task !

## Key Features

- Interoperability with all IPSec VPN Gateways
- IPSec VPN tunneling with DES / 3DES / AES encryption
- Internet Key Exchange (IKE) for user authentication
- Supports all connection type : DSL, dialup modem, Ethernet, wireless, ...
- DPD and Redundant gateway
- Mode-Config (auto, manual)
- Use USB Stick to store VPN Security Elements (network, key, certificates, ...)
- Supports all Microsoft OS

## User friendly

The interface of TheGreenBow™ VPN Client makes it popular. Easy to install, easy to configure, easy to read, it comes together with a configuration wizard and gateways-configuration-guides that help users to create VPN connections quickest as ever before. Thus, it represents cost-effective solution for integrators.

## Universal VPN Ipsec Client

TheGreenBow™ VPN Client runs on Windows 98, Me, NT4, 2000 and XP workstations. It has also been extensively tested for interoperability with multiple vendor's gateways. The expanding list of interoperable gateways is available on our web site.

## Point-to-Point tunnel support

TheGreenBow™ VPN Client is able to create VPN tunnels with other TheGreenBow™ VPN clients, allowing users to create confidential sub-networks inside corporate LAN or to securize wireless LAN.

## Management options

Configuration and parameters are stored in a unique file. Thus, deploying TheGreenBow™ VPN client is as easy as copying a file. Moreover, various management tools allow administrators to control when and how TheGreenBow™ VPN Client should run.

## Scalability

From private users concerned with the security of their home wireless network, to big companies equipping their remote workforce, TheGreenBow™ VPN client represents an efficient and affordable solution for all sizes of projects.

## TheGreenBow

28 rue de Caumartin  
75009 Paris – France  
Phone : +33.1.43.12.39.30  
[www.thegreenbow.com](http://www.thegreenbow.com)

## Product Specifications

- **Hash algorithms**  
 MD5-HMAC 128 bit authentication  
 SHA1-HMAC 160-bit authentication
- **Encryption**  
 DES-CBC 56 bit encryption  
 3DES-CBC 168 bit encryption  
 AES 128, 192, 256 bit encryption
- **Diffie Hellman Group Support**  
 Group 1 : MODP 768  
 Group 2 : MODP 1024  
 Group 5 : MODP 1536  
 Group 14 : MODP 2048
- **Authentication Mechanism**  
 Preshared Key  
 X509 Certificate support (PEM)  
 X-Auth
- **Certificate**  
 Flexible Certificate Support (PEM, PKCS12, ... )
- **Key Management**  
 ISAKMP (RFC2408)  
 IKE (RFC2409)
- **IKE & IPsec Mode**  
 ESP, Tunnel, Transport  
 Main, Aggressive, Quick
- **USB stick mode**  
 All formats supported (SD, MMC, ... )  
 Auto close, Auto open IPsec tunnels when plug in or remove USB Stick  
 Security Elements (e.g. network configuration, shared key, certificates, ..) cannot be used on other computers
- **Networking**  
 NAT traversal (Draft1, 2 & 3) allows IPsec connection through a NAT device.  
 Main mode & aggressive mode  
 NAT keep Alive, Payload NAT\_OA, IP address emulation  
 Multi tunneling to several Gateways  
 Dead Peer Detection (DPD) support
- **Connection Technologies**  
 DSL, dial-up modem, GPRS, Ethernet, PCMCIA cards, WIFI, etc...
- **Redundant Gateway**  
 Redundant gateway when primary is down or not responding. Use of DPD for fail over.
- **Config-Mode**  
 Automatically fetch remote network DNS, WINS server addresses. Manual Config-Mode in case remote gateway doesn't support Config-Mode.
- **Peer to Peer**  
 Peer to Peer connections  
 Accepts incoming IPsec Tunnels
- **Blocking capabilities**  
 'IPsec only' traffic filtering  
 Can block all other connections than the VPN connections.
- **Management Options**  
 Client configuration in hidden mode  
 Set of command lines to make easier deployment and management  
 Capability to start before logon  
 Launch script when tunnel open
- **Performance**  
 Runs as a service on Win2K or XP  
 High performances, no system overhead  
 Around 75 sec download over DSL
- **Customizable GUI**  
 On-demand GUI customization
- **Supported Platforms**  
 Windows 98, Me, NT4, 2000, XP.
- **Supported VPN Gateways**  
 Astaro, Bewan, Billion, Bintec, Cisco, D-Link, Efficient Network, Fortinet, FreeSwan, OpenSwan, OpenBSD, GTA, Hotbrick, Linksys, Microsoft, Netasq, Netcelo, Netgear, Netscreen, Securepoint, Sonicwall, Speedtouch, Symantec, Tuxgate, Zyxel, etc...

### TheGreenBow

28 rue de Caumartin  
 75009 Paris - France  
 Phone : +33.1.43.12.39.30  
[www.thegreenbow.com](http://www.thegreenbow.com)

### Sales information

Phone: +33.1.43.12.39.37  
[sales@thegreenbow.com](mailto:sales@thegreenbow.com)